



Kirkby Apartments  
London, E3 4GL  
£1,800 PCM

  
elms  
ESTATES

Elms Estate are please to offer to the market To Let this amazing ONE double bedroom apartment with its own balcony situated on the first floor.

Kirkby Apartments is located just off St Paul's Way which is just a short walk to Mile End and Devons Road station which makes commuting to the city very easy and accessible. The property is located with great local amenities and Mile End Park just a couple of streets away.

The property benefits from a light and airy open plan Reception/Kitchen area which has access to the balcony, One double bedroom and bathroom. The property is modern through out and is available 21 August 2025 Onwards.

For more information or to arrange a viewing please do not hesitate to call in and speak with one of our property consultants.





## Reception/Kitchen

26'2" x 10'2" (8.0 x 3.1)



## Bedroom

15'1" x 9'2" (4.6 x 2.8)



## Bathroom



## Balcony



### Material Information

Deposit: £2,076.92

Length Of Tenancy: One Year

Council Tax Band: C



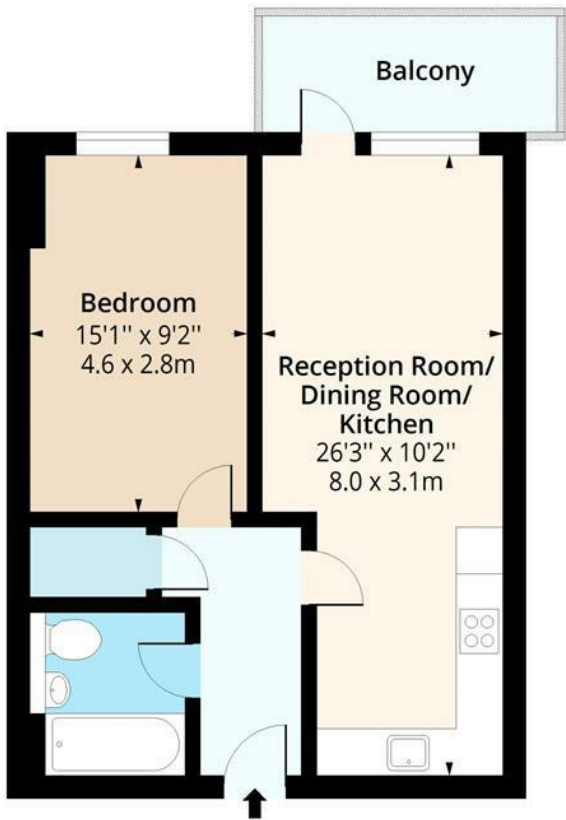






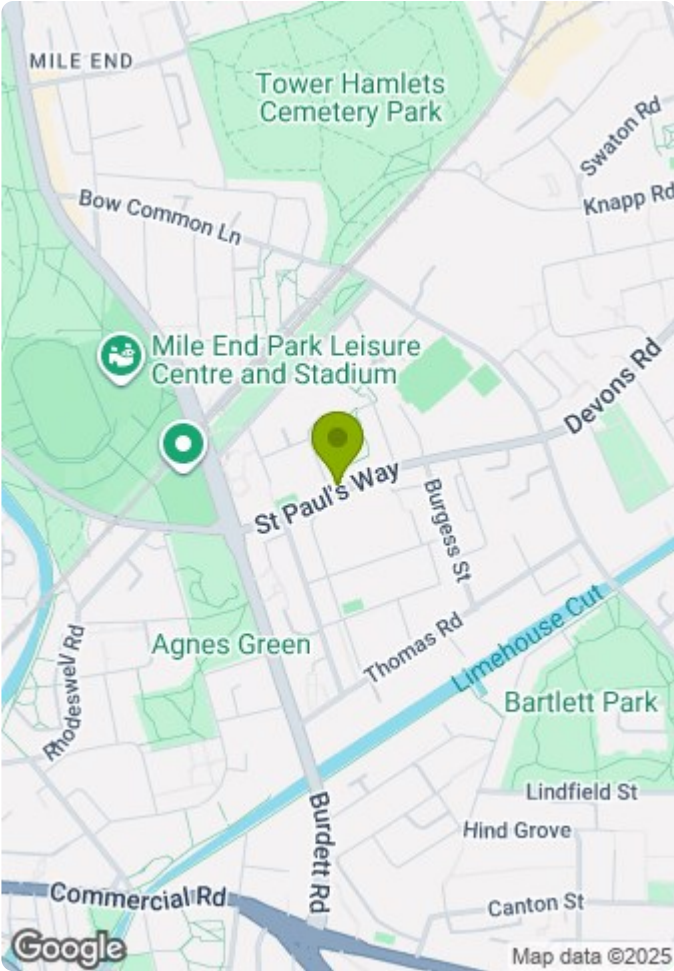
Kirkby Apartments, Baythorne Street, E3

Approx. Gross Internal Area 525 Sq Ft - 48.77 Sq M (Excluding Balcony)  
Approx. Gross Internal Area 587 Sq Ft - 54.53 Sq M (Including Balcony)



**First Floor**  
Floor Area 525 Sq Ft - 48.77 Sq M

Floor plan is for illustrative purposes only and is not to scale. Every attempt has been made to ensure the accuracy of the floor plan shown, however all measurements, fixtures, fittings and data shown are an approximate interpretation for illustrative purposes only.  
lpaplus.com



Energy Efficiency Rating		
	Current	Potential
Very energy efficient - lower running costs		
(92 plus) A		
(81-91) B		
(69-80) C		
(55-68) D		
(39-54) E		
(21-38) F		
(1-20) G		
Not energy efficient - higher running costs		
England & Wales	EU Directive 2002/91/EC	

Environmental Impact (CO <sub>2</sub> ) Rating		
	Current	Potential
Very environmentally friendly - lower CO <sub>2</sub> emissions		
(92 plus) A		
(81-91) B		
(69-80) C		
(55-68) D		
(39-54) E		
(21-38) F		
(1-20) G		
Not environmentally friendly - higher CO <sub>2</sub> emissions		
England & Wales	EU Directive 2002/91/EC	